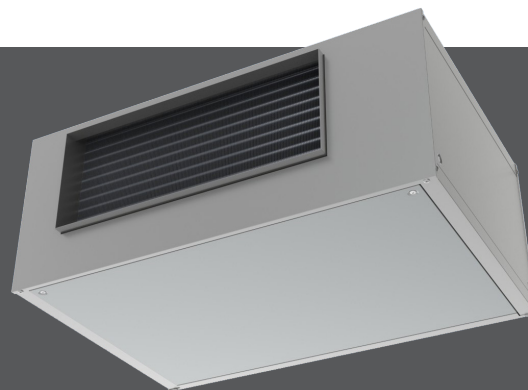


## HHE

- Performance AHRI Certified to Standard 440
- ETL-Listed. Constructed in compliance with ANSI/UL 1995 Standard
- Cabinet components fabricated of 18GA G90 galvanized
- Unpainted cabinet
- Cabinet liner in ½" dual-density fiberglass
- High-efficiency 3-row coil suitable for a 2-pipe system
- Coil manual air vent
- 1" thick disposable filter
- Multi-speed motor(s) of the permanent split capacitor (PSC) type
- Double Width Double Inlet (DWDI) direct driven blower(s) of the whisper quiet type
- Controls installed in a single control box suitable for single power supply
- Single wall condensate pan in galvanized steel, thermally protected on the outside\*
- 1" discharge grille air flanges



HHE

- 1" return air flanges
- Anti-vibration mounts for field installation



### AVAILABLE MODEL:

HHE

### OVERVIEW

Factory assembled, horizontal blow-thru, high-output HHE fan coils are designed for exposed ceiling installations free blowing into the space suitable for industrial and commercial applications.

### OPTIONAL FEATURES INCLUDE

- 4-, 5- And 6-row coils for 2-pipe systems
- Single block coil with 2, 3, 4 and 5 rows CW with 1 row re-heat or pre-heat coils for 4-pipe system applications (6 rows max)
- Single block coil with 2, 3 and 4 rows CW with 2 rows re-heat or pre-heat for 4-pipe system applications (6 rows max)
- LH or RH pipe connections entry
- Filter option include:
  - » 1" high-efficiency pleated filters
  - » 1" washable filters
- Bottom or rear return air and filter location
- Cabinet liner in ½" foil face
- Motor voltage suitable for 208V, 230V or 277V/1Ph/60Hz power supplies
- Motor in-line quick disconnect
- Thermostat and Accessories [Accessories on page V71]
- Single power supplies disconnect switch and fuses
- Automatic 2-pipe changeover switch for heating and cooling applications



See website for Specifications

- Electric heaters
- HW standby electric heater auto changeover switch
- Valve Packages [Accessories on page V71]
- Condensate pan options:
  - » Single wall condensate pan manufactured in 20GA 304 Stainless Steel
  - » Double wall construction consisting of outer and inner skins
  - » Condensate pan overflow safety switch
- Bottom or rear return air
- Access panel fasteners:
  - » Philips head screws
  - » Tamper proof fasteners
  - » Quarter turn fasteners



A Participating Corporation in the  
AHRI 440 Certification Program